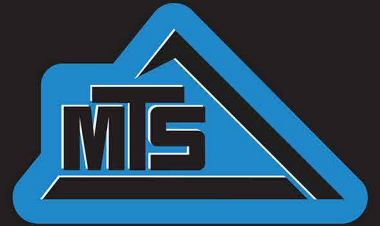


# 3630

## CONSTRUCTION-GRADE TRACTOR

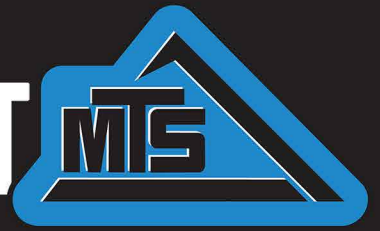


**MOBILE TRACK SOLUTIONS**



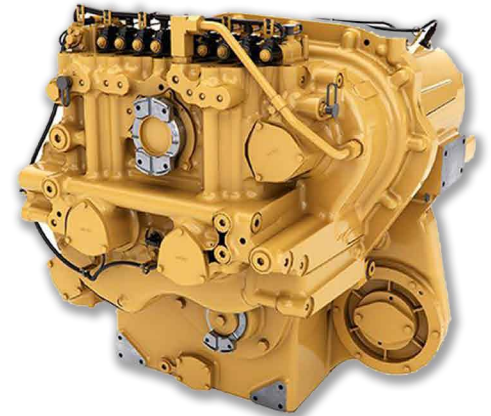
3630

# STANDARD EQUIPMENT



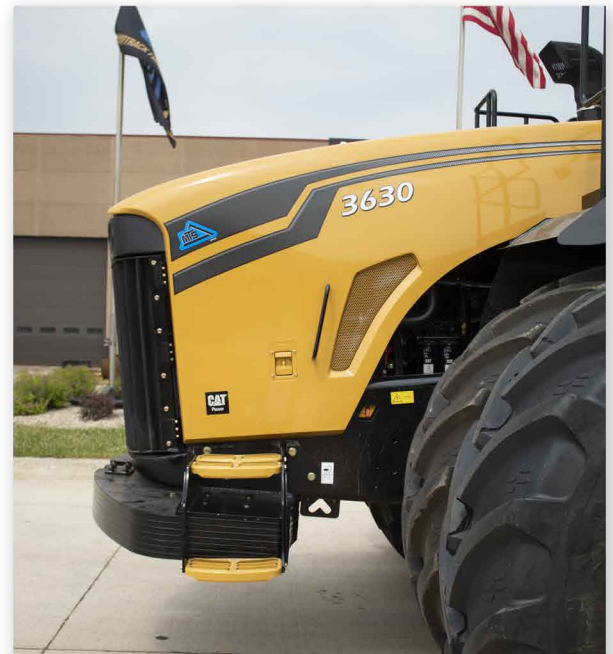
## ENGINE & AFTERTREATMENT

18.1 Liter Cat® T4F C18 ACERT™ Diesel  
630 Rated Horsepower (410 kW) at 1800 RPM  
In-Line 6 Cylinder, 4 Stroke-Cycle  
Large Radiator and Cooling System  
Advanced MEUI™-C Injector Platform  
Next Gen Precise Microburst Fuel Injection  
Turbocharged & Air-to-Air Aftercooled  
Infinitely Variable Geometry Turbo  
Integrated Cat® NOx Reduction System (NRS)  
Diesel Oxidation Catalyst (DOC)  
Diesel Particulate Filter (DPF)  
Selective Catalytic Reduction (SCR)  
Ammonia Oxidation Catalyst (AMOX)  
Pump Electronics Tank Unit (PETU)  
DEF tank is integrated into fuel tank  
Larger Radiator and Cooling System  
Long Maintenance Intervals

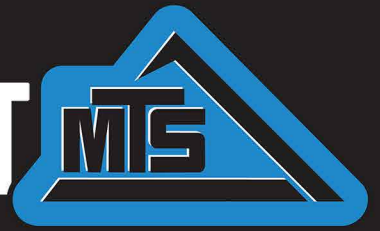


## TRANSMISSION & AXLES

Cat® TA22H Powershift 16 x 4 Transmission  
Improved Shifting Software Over Previous Model  
21 mph (33.8 km/hr) Max Road Speed  
Improved Clutch Plate Orifices for Smooth Shifts  
Inching Pedal for Convenience  
29° Total Articulation Angle  
15° Oscillation Each Way, 30° Total  
Extreme Duty Outboard Planetaries  
Front and Rear Differential Locks  
Dual Three Piston Dry Caliper ISO Compliant Brakes  
Alliance Duals VF710/70r42 or Goodyear/Titan 202D 1250LSW

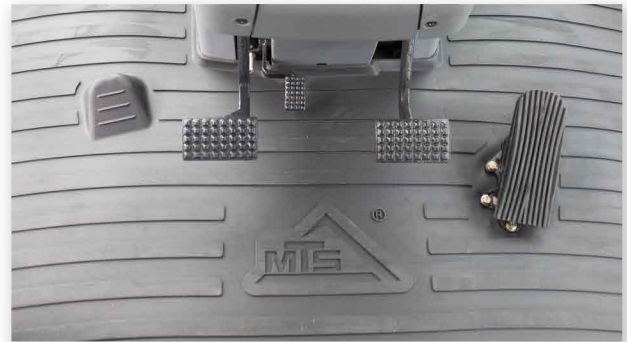


# 3630 STANDARD EQUIPMENT



## HYDRAULICS & ELECTRICAL

- Combined 120 GPM (454 L/min) High Flow Pumps
- 3,100 Max Hydraulic System PSI with 31 Gallon (117 L) Reservoir
- Six Electro-Hydraulic Valves with Digital Flow Control
- 3.5" Steering Cylinders
- 12V - 200 amp Alternator with Three 12V, 1150 CCA Batteries
- 20 Work Lights Total For Excellent Visibility



## DELUXE CAB

- Largest Cab in the Industry, 175.5 ft<sup>3</sup> (4.9 m<sup>3</sup>)
- Integral FOPS/ ROPS Cab
- Seat Mounted Right-Handed Console with Touch Screen
- 40° Right Swivel Seat Range
- Semi-Active Suspended and Heated Seat
- 10" HD Monitor
- Programmable Center HD Display Provides Readouts
- Large Training Seat
- Premium Radio FM/AM with USB Port & Bluetooth
- Front and Rear Sun Visors
- Four Cup Holders
- Automatic Climate Control
- Decelerator Pedal

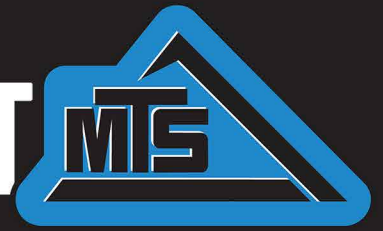


## OTHER FEATURES

- Manually Folding Cab Steps
- Braided Steel Tow Cable Mounted
- Lengthened Frame for Better Weight Distribution
- Master Shut Off Switch - Lockable
- 265 Gallon (1,002 Liter) Fuel Tank
- 12.5 Gallon (47 Liter) DEF Tank, Integrated into Fuel Tank
- 3.15" Pivot Pin
- Flip Up Side Hood Panels with Gas Shocks
- Swing Out Grille and Cooler
- Back Up Alarm
- Beacon Lights Standard



# 3630 STANDARD EQUIPMENT



## POWER

Engine HP at Rated RPM 630 hp at 2,000 rpm 469.79 kw at 2,000 rpm

## ENGINE

Manufacturer	Caterpillar
Peak Engine RPM	2,190 rpm
Type	Cat ACERT C18 Tier 4 Final
Aspiration	Single Stage Aftercooled Turbocharger
Filter, Engine air	Dual Stage Particulate Filter
Cylinders/Number of valves/Displacement	6 cyl./24 Valve/18.1L
Bore/Stroke	5.71 in / 7.2 in 145 mm / 183 mm
Compression Ratio	16.0:1
Lubrication	Full-pressure, full-flow filtration with bypass
Filter Oil	Two replaceable spin-on canister oil filters
Rated RPM	2,000 rpm

## ELECTRICAL

Alternator	200 amp Delco alternator
	3 X 1150 cca 12v batteries

## TRANSMISSION

Transmission	Cat TA22H 16 speed Powershift Transmission
Gears	16 Forward / 4 Reverse
Auto Shift	Standard

## AXLES

Rear Axle Diameter	2.5 in 63.5 mm
Axle Width	104 in 2,641.6 mm
Differential Lock	Standard
5 Axle to Axle	168 in 4,267 mm

## WHEEL OPTIONS

Alliance Duals	VF710/70R42
Goodyear/Titan	202D 1250LSW

## STEERING

Hydraulic Power Steering	Standard
--------------------------	----------

## FINAL DRIVES

Planetaries	Outboard
-------------	----------

## DRAWBAR

Half-Clamp Drawbar and Hitch Plate	Option
Quick Hitch Drawbar and Hitch Plate	Standard
Max Vertical Hitch Load	34,000 lbs 15,422.1 kg



## HYDRAULICS

Description	Closed Center Pressure Compensated	
Remote Valves	6 EH SECTIONAL VALVE	
Maximum PSI	3,100 psi	21,000 kPa
High Flow Hydraulic Pump	2X 60 gpm	2x 230 lpm
Total Tractor Hydraulic Flow	120 gpm	454 lpm
Available Flow at single remote valve (Dual Scraper)	33 gpm	125 lpm
Available Flow at single remote valve (High Flow Scraper)	55 gpm	208 lpm

## CAPACITIES

Fuel Tank	265 gal	1,002 L
DEF Tank	12.5 gal	47 L
Crankcase w/ Filter	38 qt	36 L
Differential Oil	12.1 gal	46 L
Hydraulic System	31 gal	117 L
Cooling System	18.5 gal	70 L

## BRAKES

Hydraulic Power, Dry Disk	Standard
Hydraulic Scraper Brakes	Standard

## WHEELBASE

Wheelbase Length	168 in	4,256 mm
Dual Turning Radius	354 in	8,992 mm
LSW Turning Radius	338 in	8,592 mm

## CAB

Volume	175.5 ft <sup>3</sup>	4.97 m <sup>3</sup>
Glass	86 ft <sup>2</sup>	7.99 m <sup>2</sup>

## DIMENSIONS

Base Shipping Weight	53,890 lbs	24,444 kg
1 Width (With Duals)	189 in	4,800 mm
2 Width (Without Duals)	142 in	3,606 mm
Width (LSW)	159 in	4,038 mm
3 Length (Overall Shipping)	308 in	7,823 mm
4 Height (Overall Shipping)	152 in	3,860 mm
Ground Clearance	19 in	482 mm
Outer Duals (Shipping Specs per Dual)	81.5 in X 75.0 2070 mm X 1906.5 mm	
Outer Duals (Shipping Weight per Dual)	2840 lbs	1288 kg

## MISC.

Degrees of Articulation	29°
Degrees of Oscillation	15°

